



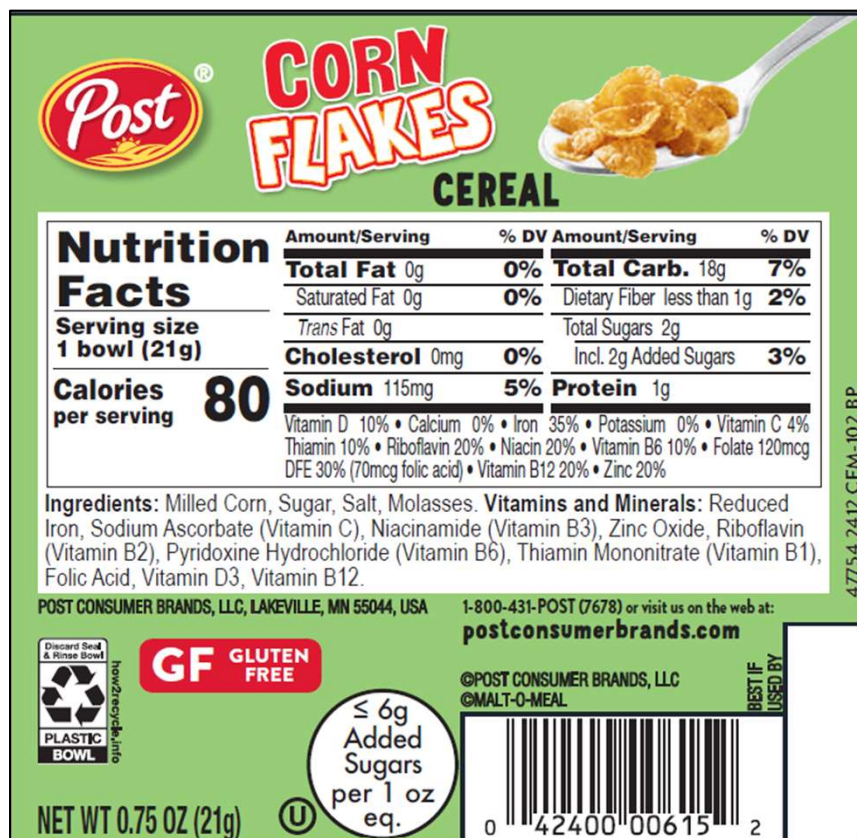
FOODSERVICE

Corn Flakes

96/0.75 oz Bowl #00615

Gluten Free

Post Classic
Soft Transition
No Formulation
Change



Traditional toasted corn flakes with vitamins and minerals



Nutritional and Program Specifications

CFM-102 BP

Oz Eq Grain Credit	0.75	Smart Snacks Qualified Snack	Yes, if day of/after menued as Entree
Whole Grain Rich	No	200 or less Calories	Yes
Whole Grain 1 st Ingredient	No	200 mg or less Sodium	Yes
6g Added Sugar Compliant	Yes	35% or less Calories from Fat	Yes
Fortified	Yes	10% or less Calories from Sat Fat	Yes
Declared Allergens	None	0g Trans Fat	Yes
Artificial Flavors	No	35% or less by weight from Total Sugars	Yes
Certified Synthetic Colors	No	CACFP Qualified	Yes
Nuts	No	K12 Buy American Compliant	Yes
BHT/BHA/TBHQ	No	Kosher	OU
HFCS	No	Shelf Life	365 Days

Case Specifications

Pack	96/ 0.75 oz	Ship Weight (pounds)	7.17
GTIN	100-42400-00615-9	Case Cube (cu. Ft.)	1.79
Ti/Hi	9/3	Case Dimensions L x W x H (inches)	16.56 X 13 X 14.38
Cases per Pallet	27	Storage	Cool / Dry

For more information or to find your Sales Manager: <https://www.postconsumerbrands.com/food-service/>



Product Formulation Statement for Documenting Grains In Child Nutrition Programs

(Crediting Standards Based on Exhibit A Weights per Ounce Equivalent)

Product Name: Corn Flakes

Product SKU: 00615

Manufacturer: Post Consumer Brands

Serving Size: 21 g

Does the product meet the whole grain rich criteria? No Is the product fortified? Yes

Use Exhibit A: Grain Requirements for Child Nutrition Programs in the Food Buying Guide for Child Nutrition Programs (FBG) to determine if the product fits into Groups A-G (baked goods), Group H (cereal grains) or Group I (RTE breakfast cereals). (Different methodologies are applied to calculate the grains contribution based on creditable grains. Groups A-G use the standard of 16 g creditable grains per oz eq; Groups H and I use the standard of 28 g creditable grains per oz eq or volume.)

Indicate which Exhibit A Group (A-I) the product belongs: Group I - RTE Breakfast Cereals

Product Description Per Exhibit A	Portion Size of Product as Purchased A	Weight of 1 oz. eq. as Listed in Exhibit A B	Creditable Amount A ÷ B
RTE Breakfast Cereal (Cold/Dry)	21 g	28 g	0.75 oz eq
Total Creditable Amount			0.75 oz eq

Total Creditable Amount must be rounded down to the nearest quarter (0.25) oz eq. Do not round up.

Total weight (per portion) of product as purchased: 21 g

Total contribution of product (per portion) oz eq: 0.75 oz eq

I certify that the above information is true and correct and that a 21 g portion of this product (ready for serving) provides 0.75 oz eq grains. I further certify that non-creditable grains are not above 0.24 oz eq per portion. Products in Group I with more than 0.24 oz eq or 6.99 g of non-creditable grains do not credit towards the grains requirement for school meals.

Victoria Schlecht

Sr. Regulatory Scientist
Post Consumer Brands

Signed: January 8, 2025

For more information on our K12 cereals

Contact Sheri Petrich, SNS, K12 Specialist: 724-971-0010 | slpetrich@postholdings.com or
Go to: <https://www.postconsumerbrands.com/food-service/>

CFM 102 BP