



FOODSERVICE

Chocolate Hot Wheat

12/28 oz Boxes

00136

Nutrition Facts

About X servings per container
Serving size 3 Tbsp dry (35g)

Amount per serving
Calories 130

	% Daily Value*
Total Fat 0g	0%
Saturated Fat 0g	0%
Trans Fat 0g	
Cholesterol 0mg	0%
Sodium 0mg	0%
Total Carbohydrate 28g	10%
Dietary Fiber 1g	4%
Total Sugars 6g	
Includes 6g Added Sugars	12%

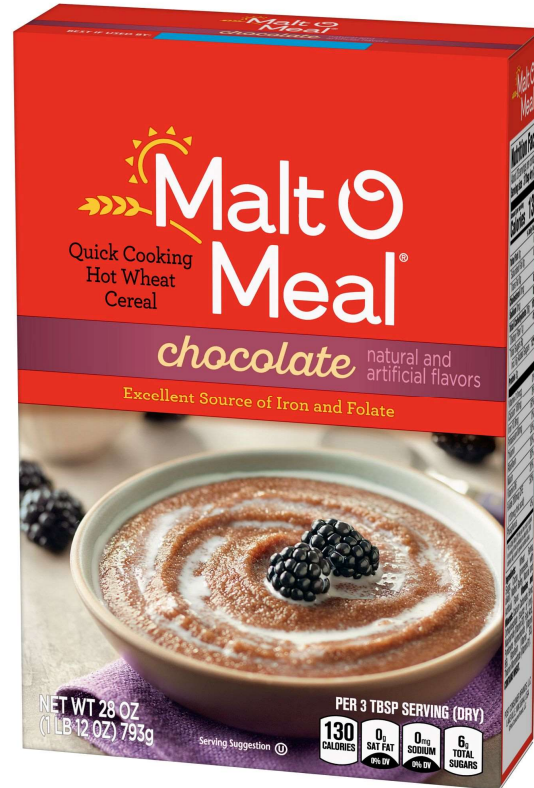
Protein 3g	
Vitamin D 0mcg	0%
Calcium 100mg	8%
Iron 10.8mg	60%
Potassium 80mg	0%
Thiamin	30%
Riboflavin	20%
Niacin	30%
Vitamin B6	20%
Folate 200mcg DFE (120mcg folic acid)	50%
Phosphorus	4%

*The % Daily Value (DV) tells you how much a nutrient in a serving of food contributes to a daily diet. 2,000 calories a day is used for general nutrition advice.

Ingredients: Wheat Farina, Sugar, Cocoa (processed with alkali), Malted Barley, Natural and Artificial Flavor.

Vitamins and Minerals: Calcium Carbonate, Ferric Orthophosphate (source of iron), Niacinamide (Vitamin B3), Folic Acid, Pyridoxine Hydrochloride (Vitamin B6), Riboflavin (Vitamin B2), Thiamin Mononitrate (Vitamin B1).

CONTAINS WHEAT.



Nutritional and Program Specifications			HWC-100
Oz Eq Grain Credit	1.25 oz eq Grain	Smart Snacks Qualified Snack	No
Whole Grain Rich	No	200 or less Calories	Yes
Whole Grain 1st Ingredient	No	200 mg or less Sodium	Yes
6 g or less Sugar per oz	Yes	35% or less Calories from Fat	Yes
Fortified	Yes	10% or less Calories from Sat Fat	Yes
Allergens	Wheat	0g Trans Fat	Yes
Artificial Flavors	Yes	35% or less by weight from Total Sugars	Yes
Certified Synthetic Colors	No	CACFP Qualified	No
Nuts	No	Buy American Compliant	Yes – Made in USA
BHT/BHA/TBHQ	No	Kosher	OU
HFCs	No	Shelf Life	455 Days

Case Specifications			
Case Code	00136	Ship/Net Weight (pounds)	22.99 / 21
GTIN	100-42400-00136-9	Case Cube (cu. Ft.)	0.59
Hi/Ti	4/12	Case Dimensions L x W x H (inches)	11.13 x11 x 8.31
Cases per Pallet	48	Storage	Cool / Dry

For more information or to find your Sales Manager: <https://www.postconsumerbrands.com/food-service/>



FOODSERVICE

Product Formulation Statement for Documenting Grains In Child Nutrition Programs

(Crediting Standards Based on Exhibit A Weights per Ounce Equivalent)

Product Name: Chocolate Hot Wheat

Product SKU: 00136

Manufacturer: Post Consumer Brands

Serving Size: 35 g dry

Does the product meet the whole grain rich criteria? No Is the product fortified? Yes

Use Exhibit A: Grain Requirements for Child Nutrition Programs in the Food Buying Guide for Child Nutrition Programs (FBG) to determine if the product fits into Groups A-G (baked goods), Group H (cereal grains) or Group I (RTE breakfast cereals). (Different methodologies are applied to calculate the grains contribution based on creditable grains. Groups A-G use the standard of 16 g creditable grains per oz eq; Groups H and I use the standard of 28 g creditable grains per oz eq or volume.)

Indicate which Exhibit A Group (A-I) the product belongs: Group H - Breakfast Cereal Cooked

Product Description Per Exhibit A	Portion Size of Product as Purchased A	Weight of 1 oz. eq. as Listed in Exhibit A B	Creditable Amount A ÷ B
Breakfast Cereal (Cooked)	35 g dry	28 g	1.25
Total Creditable Amount			1.25

Total Creditable Amount must be rounded down to the nearest quarter (0.25) oz eq. Do not round up.

Total weight (per portion) of product as purchased: 35 g dry

Total contribution of product (per portion) oz eq: 1.25 oz eq

I certify that the above information is true and correct and that a 35 g portion of this product (ready for serving) provides 1.25 oz eq grains. I further certify that non-creditable grains are not above 0.24 oz eq per portion. Products in Group I with more than 0.24 oz eq or 6.99 g of non-creditable grains do not credit towards the grains requirement for school meals.

Victoria Schlecht
Sr. Regulatory Scientist
Post Consumer Brands

Signed: February 19, 2024

For more information on our K12 cereals

Contact Sheri Petrich, SNS, K12 Specialist: 724-971-0010 | slpetrich@postholdings.com or

Go to: <https://www.postconsumerbrands.com/food-service/>

HWC-100