

**FOODSERVICE**

Chocolate Hot Wheat

12/28 oz Boxes

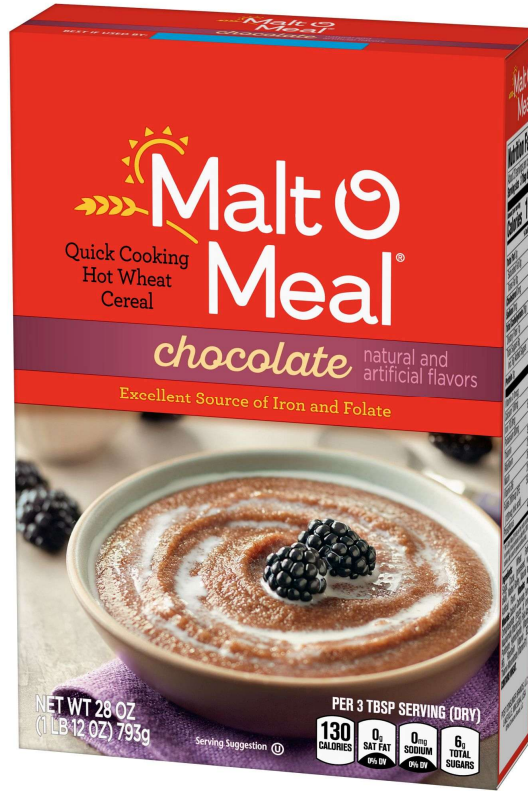
00136

Nutrition Facts	
About X servings per container	
Serving size 3 Tbsp dry (35g)	
Amount per serving	
Calories	130
% Daily Value*	
Total Fat 0g	0%
Saturated Fat 0g	0%
Trans Fat 0g	
Cholesterol 0mg	0%
Sodium 0mg	0%
Total Carbohydrate 28g	10%
Dietary Fiber 1g	4%
Total Sugars 6g	
Includes 6g Added Sugars	12%
Protein 3g	
Vitamin D 0mcg	0%
Calcium 100mg	8%
Iron 10.8mg	60%
Potassium 80mg	0%
Thiamin	30%
Riboflavin	20%
Niacin	30%
Vitamin B6	20%
Folate 200mcg DFE	50%
(120mcg folic acid)	
Phosphorus	4%

Ingredients: Wheat Farina, Sugar, Cocoa (processed with alkali), Malted Barley, Natural and Artificial Flavor.

Vitamins and Minerals: Calcium Carbonate, Ferric Orthophosphate (source of iron), Niacinamide (Vitamin B3), Folic Acid, Pyridoxine Hydrochloride (Vitamin B6), Riboflavin (Vitamin B2), Thiamin Mononitrate (Vitamin B1).

CONTAINS WHEAT.



Nutritional and Program Specifications

HWC-100

Oz Eq Grain Credit	1.25 oz eq Grain	Smart Snacks Qualified Snack	Yes, if day of/after menued as Entree
Whole Grain Rich	No	200 or less Calories	Yes
Whole Grain 1 st Ingredient	No	200 mg or less Sodium	Yes
Added Sugar Compliant	Yes	35% or less Calories from Fat	Yes
Fortified	Yes	10% or less Calories from Sat Fat	Yes
Allergens	Wheat	0g Trans Fat	Yes
Artificial Flavors	Yes	35% or less by weight from Total Sugars	Yes
Certified Synthetic Colors	No	CACFP Qualified	No
Nuts	No	Buy American Compliant	Yes
BHT/BHA/TBHQ	No	Kosher	OU
HFCS	No	Shelf Life	455 Days

Case Specifications

Case Code	00136	Ship/Net Weight (pounds)	22.99 / 21
GTIN	100-42400-00136-9	Case Cube (cu. Ft.)	0.59
Hi/Ti	4/12	Case Dimensions L x W x H (inches)	11.13 x11 x 8.31
Cases per Pallet	48	Storage	Cool / Dry

For more information or to find your Sales Manager: <https://www.postconsumerbrands.com/food-service/>



Product Formulation Statement for Documenting Grains In Child Nutrition Programs

(Crediting Standards Based on Exhibit A Weights per Ounce Equivalent)

Product Name: Chocolate Hot Wheat

Product SKU: 00136

Manufacturer: Post Consumer Brands

Serving Size: 35 g dry

Does the product meet the whole grain rich criteria? No Is the product fortified? Yes

Use Exhibit A: Grain Requirements for Child Nutrition Programs in the Food Buying Guide for Child Nutrition Programs (FBG) to determine if the product fits into Groups A-G (baked goods), Group H (cereal grains) or Group I (RTE breakfast cereals). (Different methodologies are applied to calculate the grains contribution based on creditable grains. Groups A-G use the standard of 16 g creditable grains per oz eq; Groups H and I use the standard of 28 g creditable grains per oz eq or volume.)

Indicate which Exhibit A Group (A-I) the product belongs: Group H - Breakfast Cereal Cooked

Product Description Per Exhibit A	Portion Size of Product as Purchased A	Weight of 1 oz. eq. as Listed in Exhibit A B	Creditable Amount A ÷ B
Breakfast Cereal (Cooked)	35 g dry	28 g	1.25
Total Creditable Amount			1.25

Total Creditable Amount must be rounded down to the nearest quarter (0.25) oz eq. Do not round up.

Total weight (per portion) of product as purchased: 35 g dry

Total contribution of product (per portion) oz eq: 1.25 oz eq

I certify that the above information is true and correct and that a 35 g portion of this product (ready for serving) provides 1.25 oz eq grains. I further certify that non-creditable grains are not above 0.24 oz eq per portion. Products in Group I with more than 0.24 oz eq or 6.99 g of non-creditable grains do not credit towards the grains requirement for school meals.

Victoria Schlecht

Sr. Regulatory Scientist
Post Consumer Brands

Signed: February 19, 2024

For more information on our K12 cereals

Contact Sheri Petrich, SNS, K12 Specialist: 724-971-0010 | slpetrich@postholdings.com or
Go to: <https://www.postconsumerbrands.com/food-service/>

HWC-100